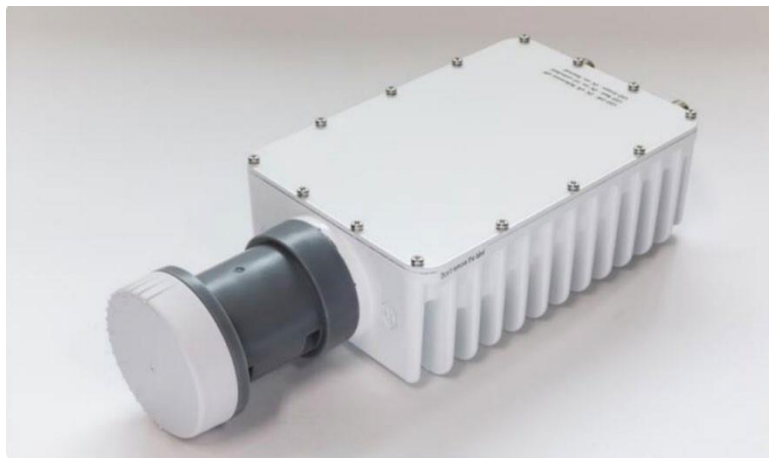


Complete VSAT outdoor unit solution in a single box, suited for most demanding commercial needs.



Key Features

- All-in-one, including a feed horn
- Lightweight and compact
- 3W output power
- 25W power consumption
- RoHS compliant

3W Lower Ku-band Transceiver Technical Specifications

Mechanical & Electrical		
Dimensions		217 x 96.8 x 53.5mm
Weight		1.095kg
Flange for transceiver fixation to antenna		40mm diameter, 35mm length
Supply voltage		15 to 24VDC
Power consumption	$P_{out} = 34\text{dBm}$ 10MHz ref. off	18W typ., 25W max. 4W max.
IF connectors	Tx Rx	F-type female F-type female
Environmental		
Temperature range	Operational Survival	-40°C to +55°C -40°C to +85°C
Humidity		0 – 100%
Altitude		4500m
Environmental protection level		IP67
RF-Rx		
Input frequency		10.70 – 11.70GHz
IF frequency		950 – 1950MHz
Noise figure		<1.3dB
Conversion gain		57dB typ.
Gain variation	Over 36MHz Over whole bandwidth	0.75dB 4dB
LO frequency		9.75GHz
LO phase noise	1kHz 10kHz 100kHz 1MHz	-70dBc/Hz -80dBc/Hz -90dBc/Hz -100dBc/Hz
LO stability		±500kHz
RF TX		
Tx output power @ P_{1dB}		34.5dBm typ
Tx output frequency		12.75 – 13.25GHz
3d order Intermodulation products	@ $P_{out} = 31\text{dBm}$	-22dBc min.
Tx IF frequency		950 – 1450MHz
LO frequency		11.8GHz
LO reference frequency		10MHz
Conversion gain		58dB typ.
Gain variation	Over 60MHz Over full band	1.5dB 4dB peak-to-peak
Spurious emission	In band Out of band	-60dBc -50dBc
External reference requires	Input frequency Input power level Phase noise	10MHz sinus -5 to +5dBm -125dBc/Hz @100Hz offset -135dBc/Hz @1000Hz offset -140dBc/Hz @10kHz offset
Mute		Shut off Tx in case of LO unlocked or no 10MHz external reference signal
RF-Feed/OMT		
Polarization		Linear orthogonal
Cross pol isolation		>30dB
Tx/Rx isolation in Rx band		>80dB
Tx/Rx isolation in Tx band		>30dB
Feed adaptation for antenna F/D		0.65